

SANDSTONE:clr-trnsl,frstd,lt gry,f-crs,com v crs,v pr srt,ang-sbang,mnr nod pyr,lse,uncons,gd inf por,no fluor.

SANDSTONE:clr-trnsl,frstd,med gry,trnsl/orng,med-v crs,pr srt,ang-sbang,occ pyr cmt i/p,occ Fe stng,mnr frac grs,lse,rr mod hd aggs,pr vis por,gd inf por,no fluor.

SILTSTONE:med brn,med gry,arg,aren,com pyr,occ liths,hd,sbblky.

Pember Fm  
301.9m (-224.4m TVDSS)

13.375" CASING SHOE  
SET @ 303.5m

Bit 2: SMITH XR+CPS  
Size: 12.25" Jets: 4x14  
In: 307m Out: 1255m  
Run: 948m Hrs: 34.04  
Cond: 2-2-NO-A-2-I-NR-TD

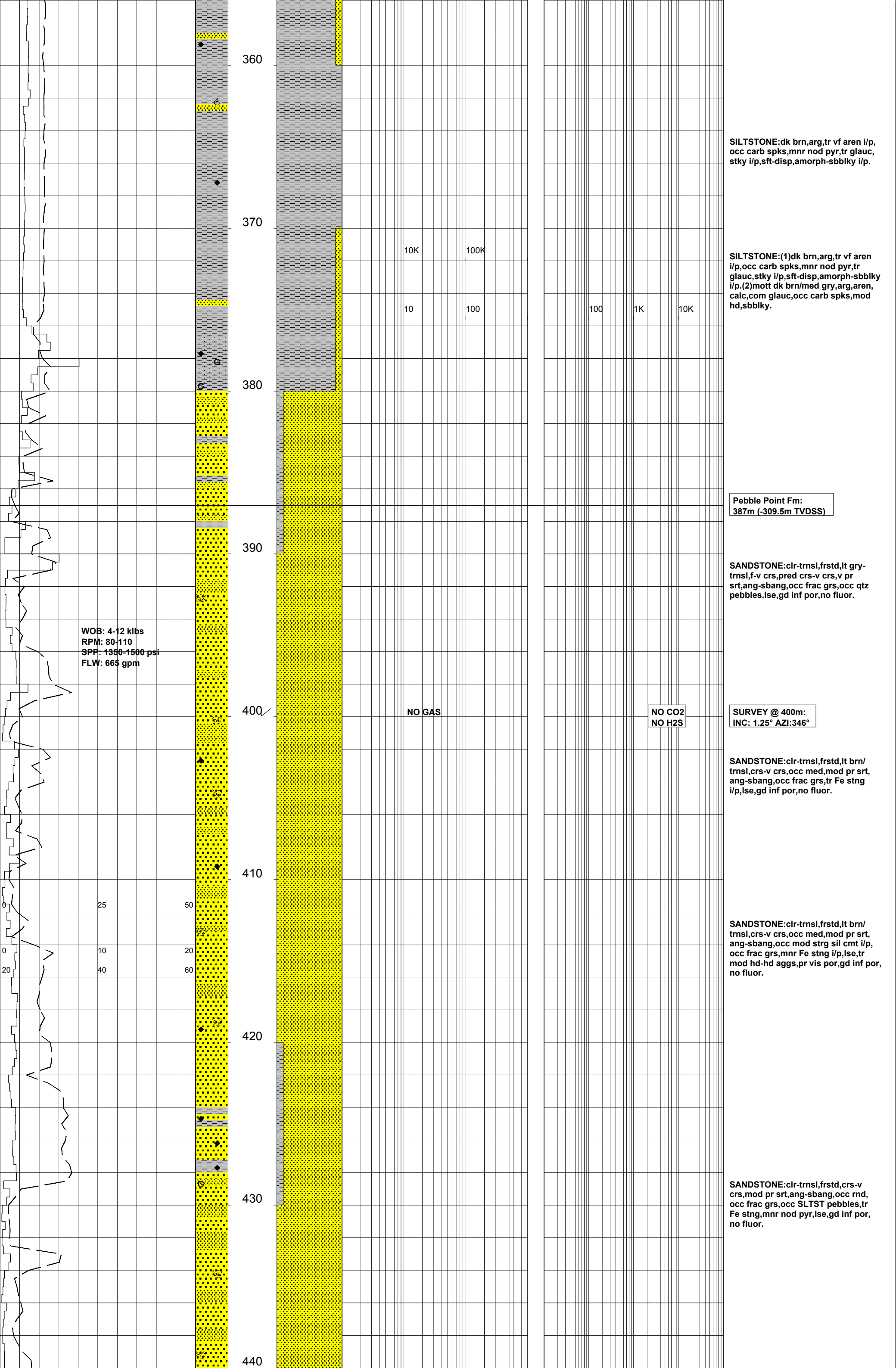
FIT @ 310m: EMW = 12.0 ppg

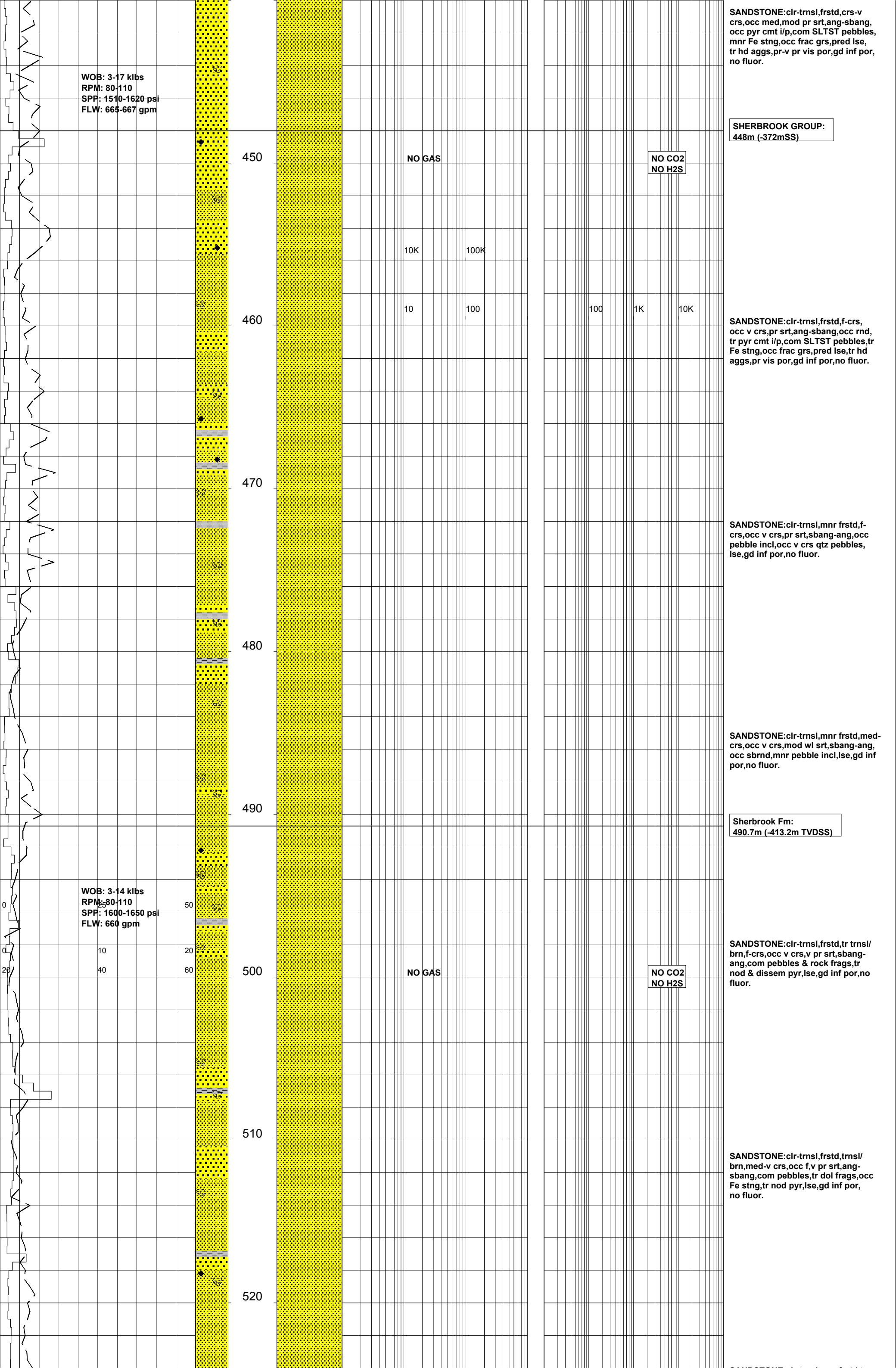
SILTSTONE:dk brn,brn/gry,arg,com carb spks,occ off wh liths,sft,amorph-sbblky.

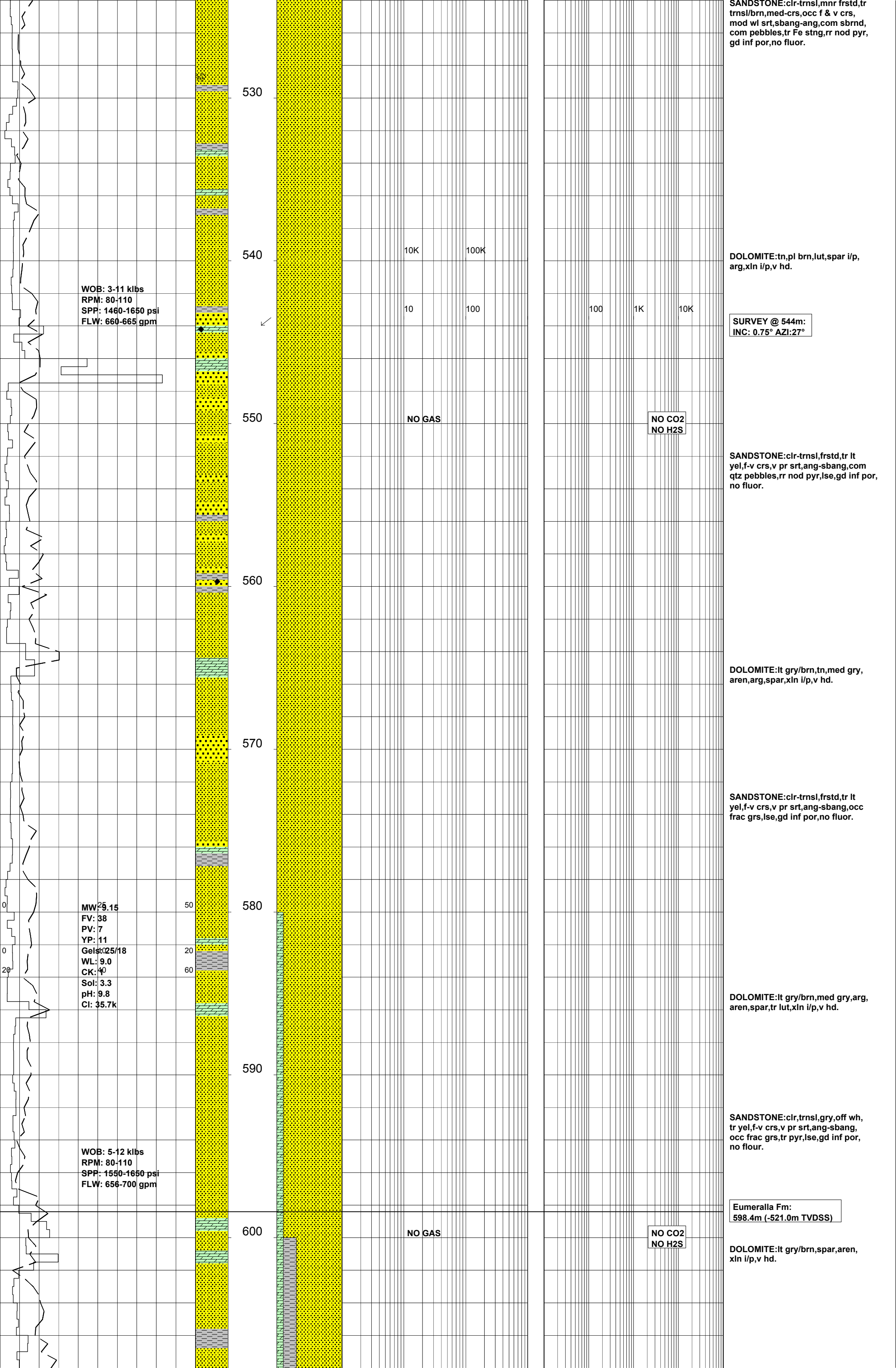
SANDSTONE:clr-trnsl,frstd,med-crs,occ f,pr srt,ang,occ sbang,com pyr cmt i/p,pred lse grs,mnr hd-v hd aggs,pr-v pr vis por,gd inf por,no fluor.

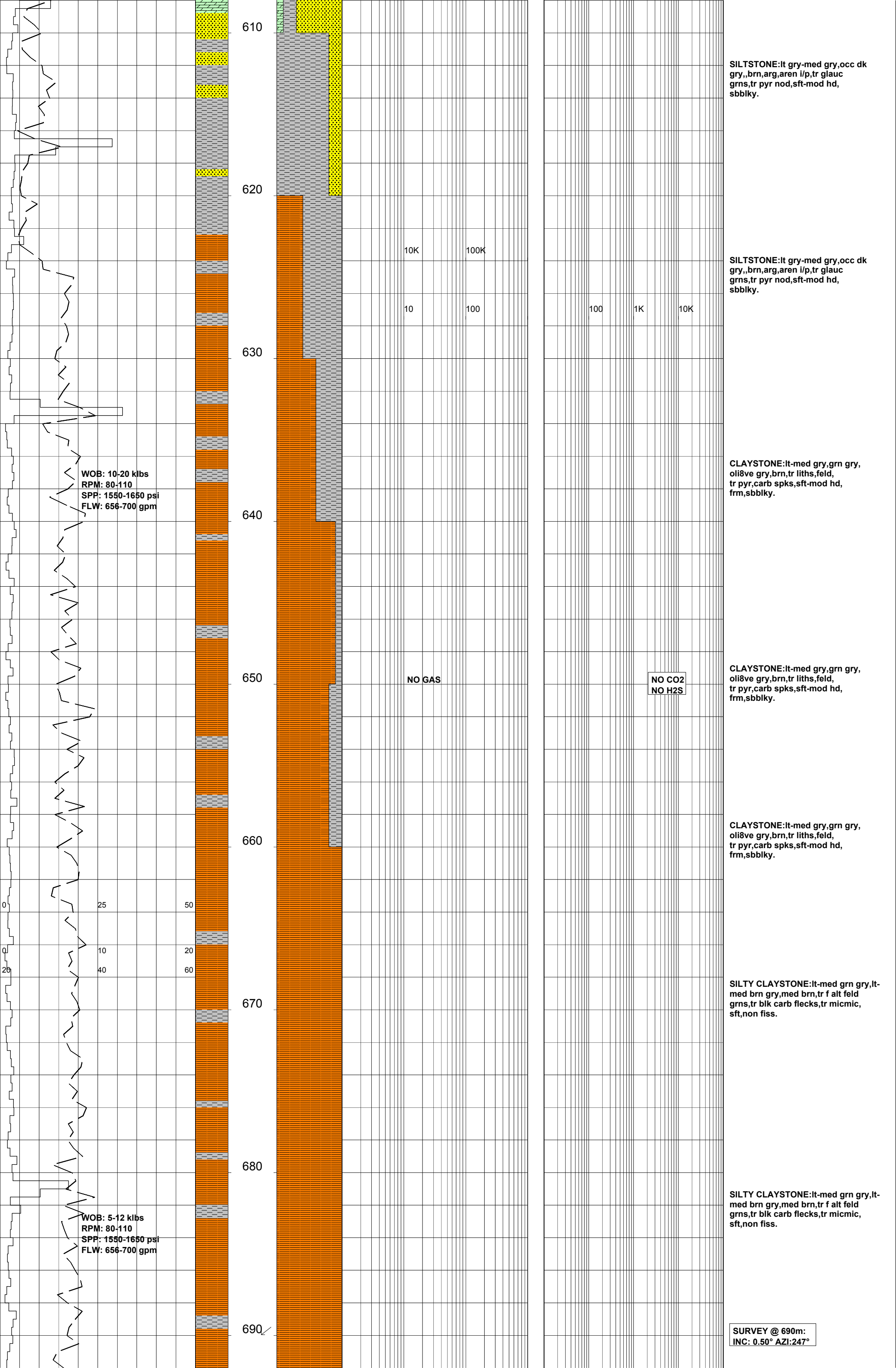
SILTSTONE:dk brn,mnr dk brn/gry,arg,tr vf aren i/p,calc i/p,occ carb spks,mnr nod pyr,tr glauc,sft-disp,amorph-sbblky i/p.

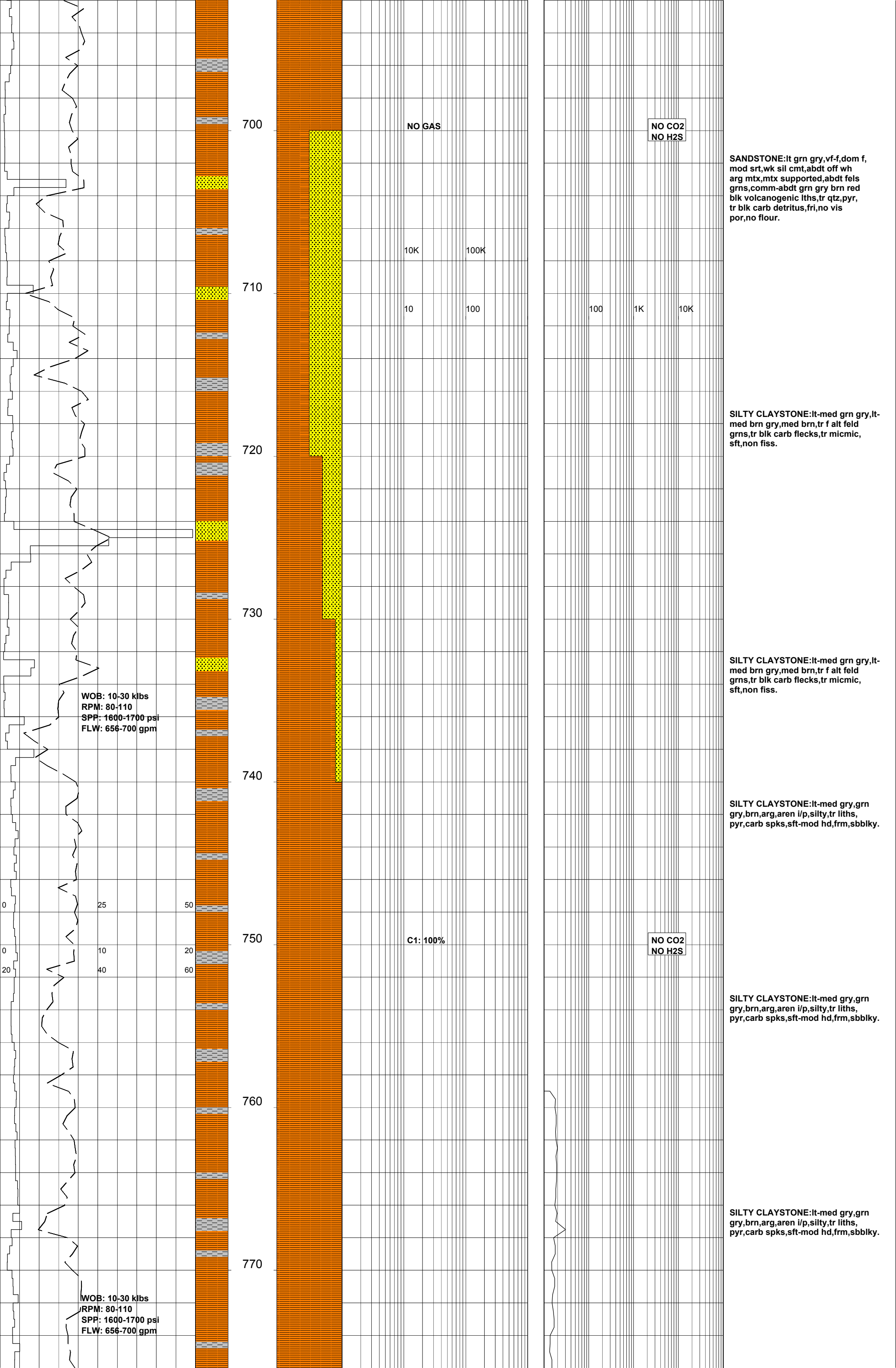
LIMESTONE:(Tr)lt brn,off wh-lt brn,lut,arg,foss,shell frags,hd.



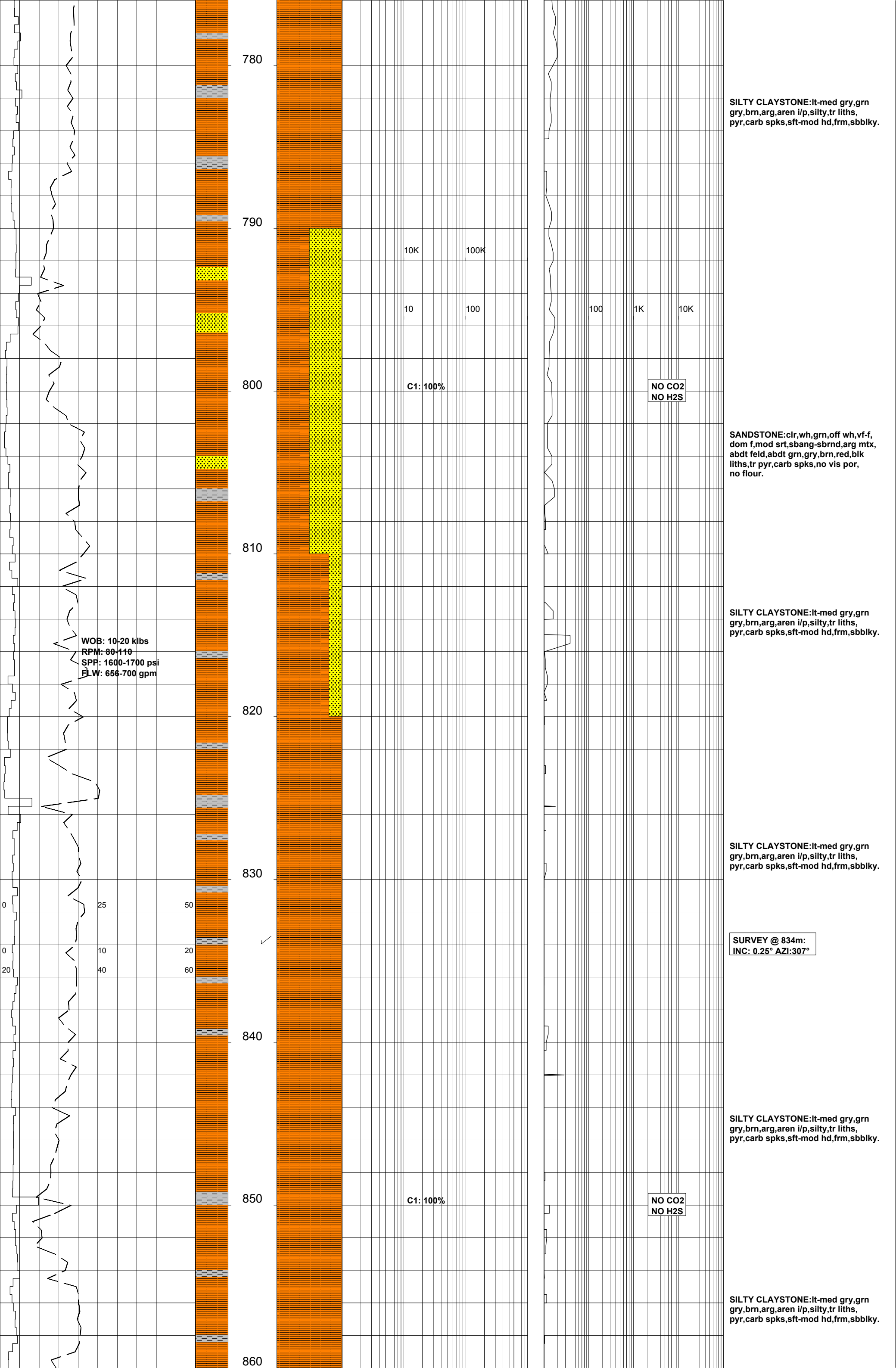


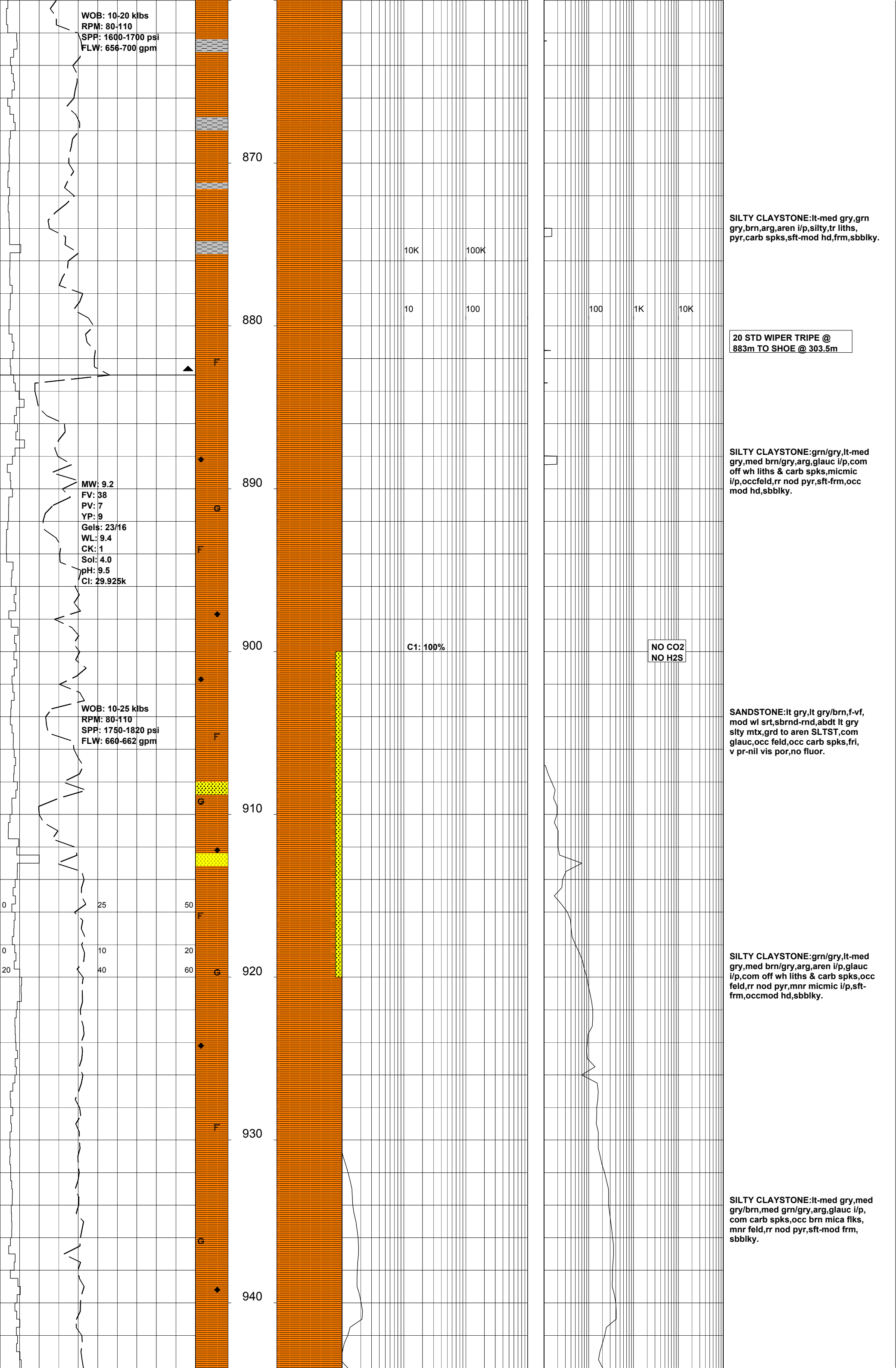


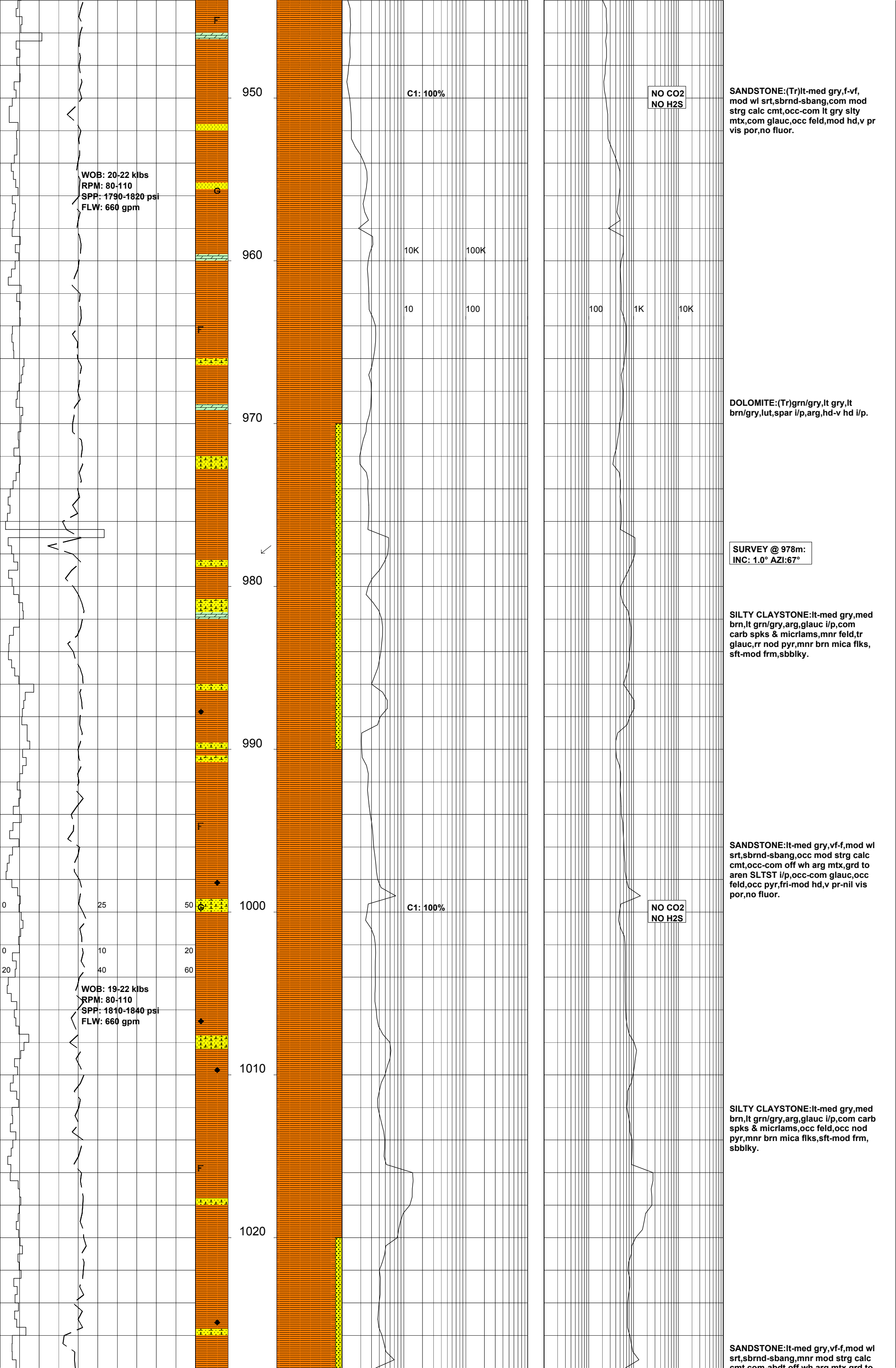


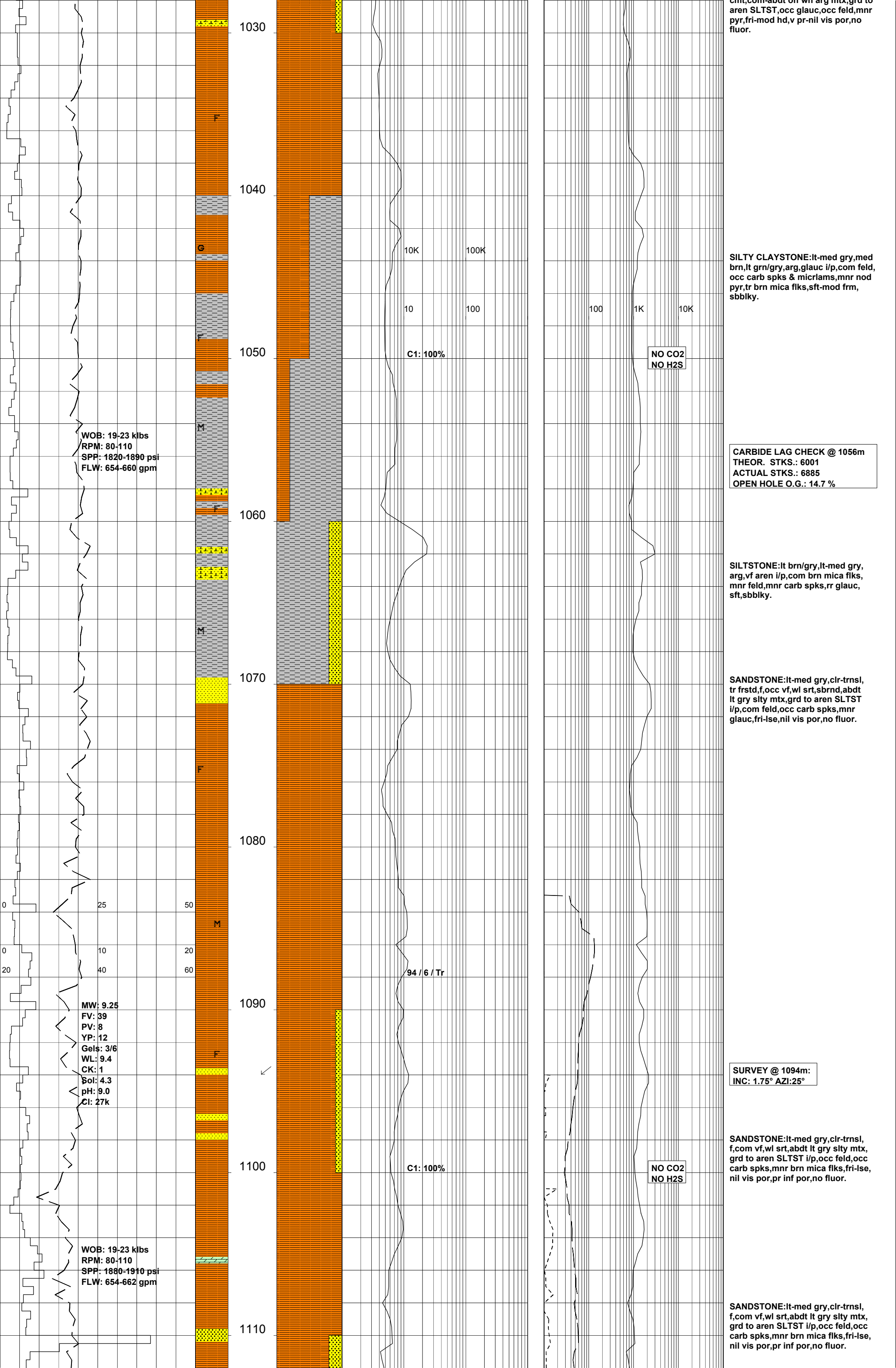


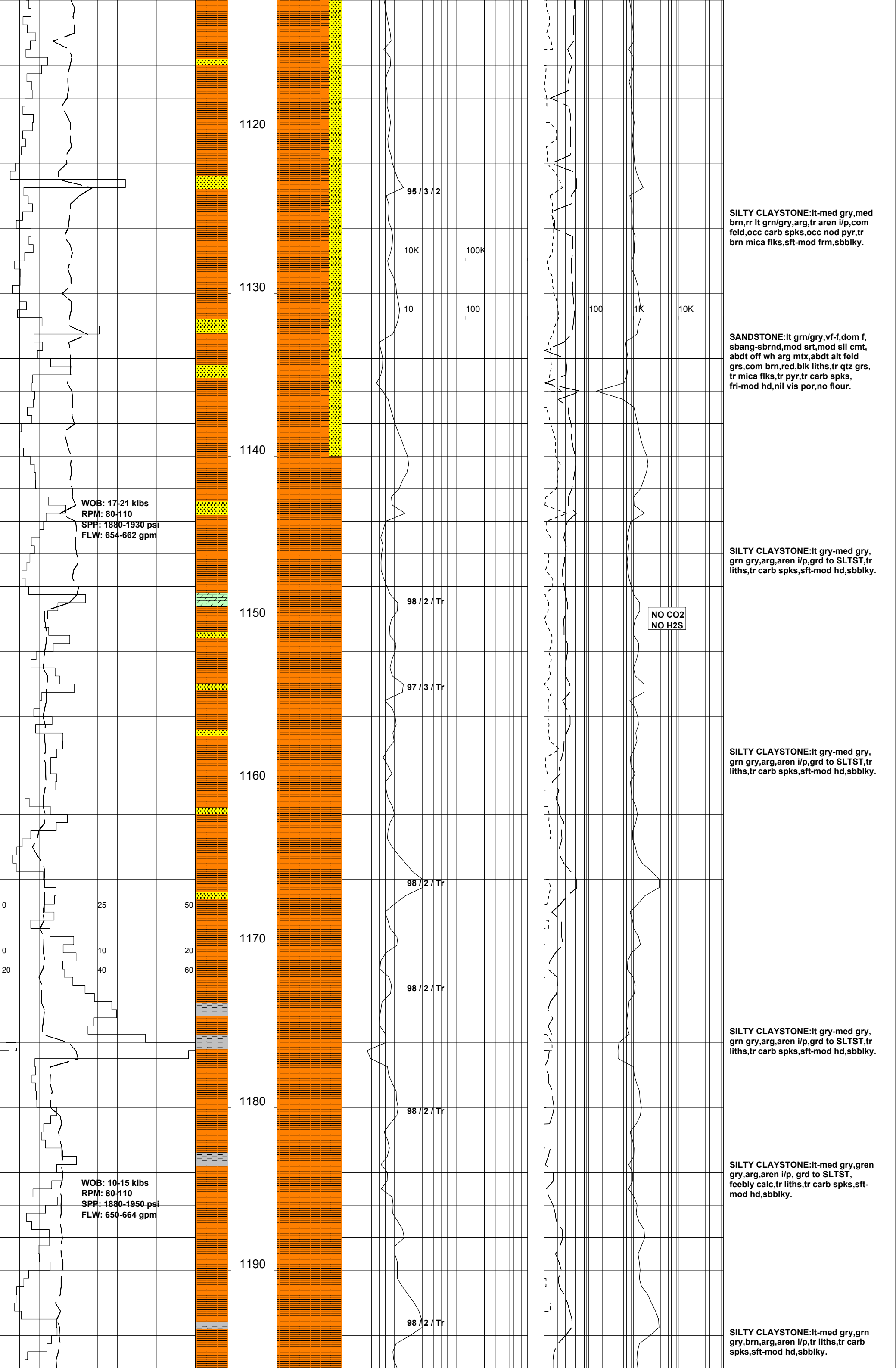


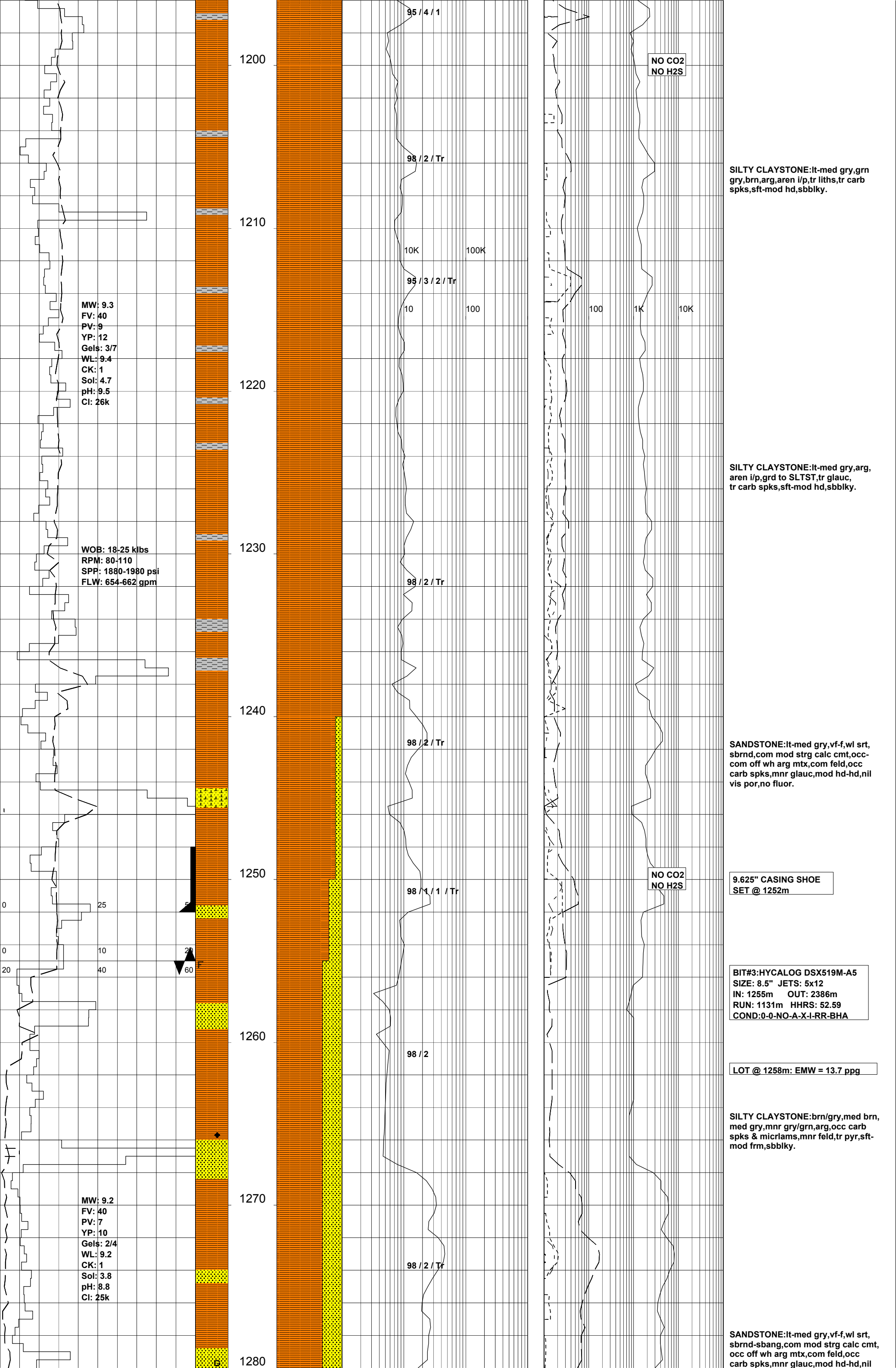




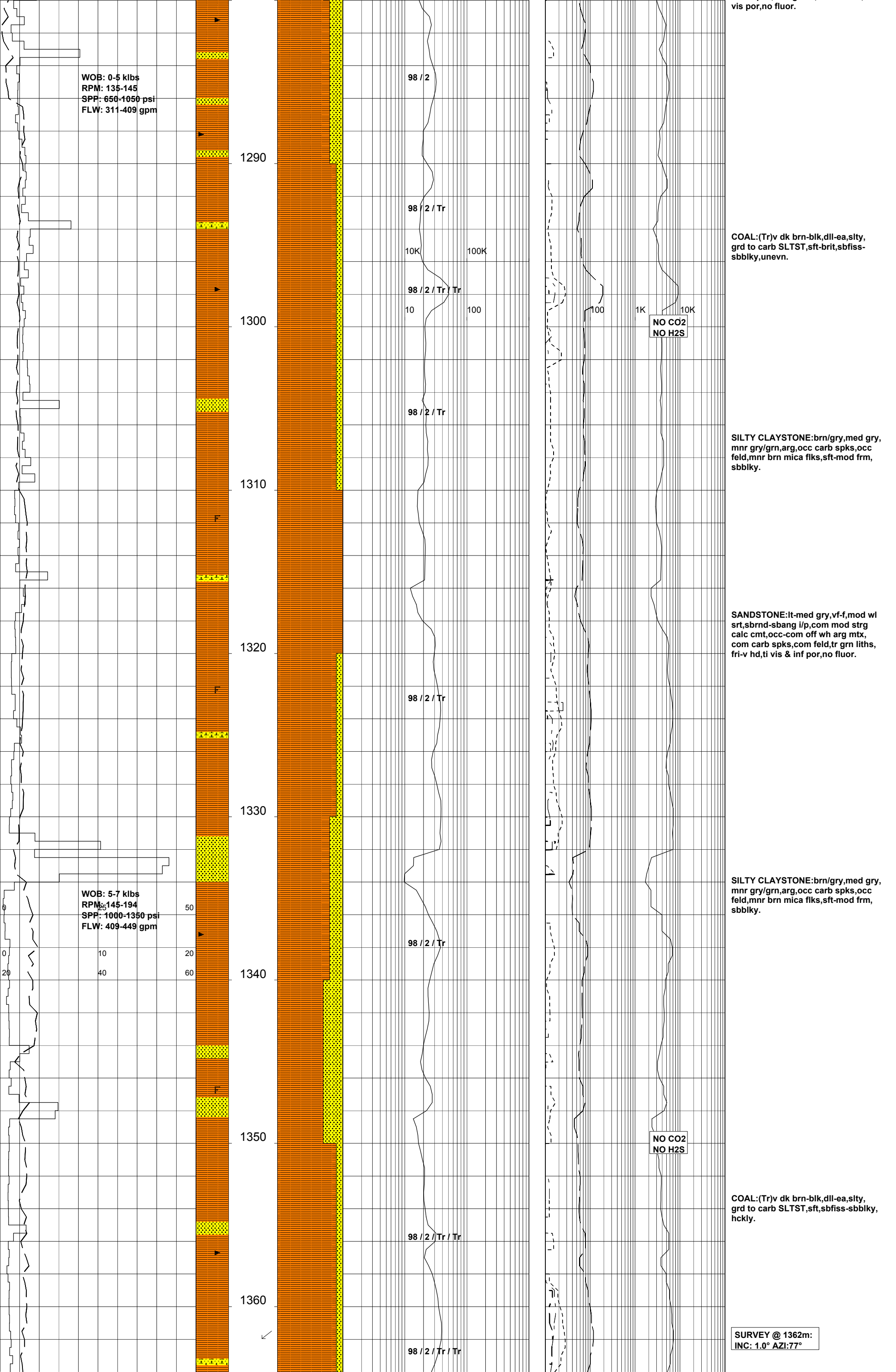


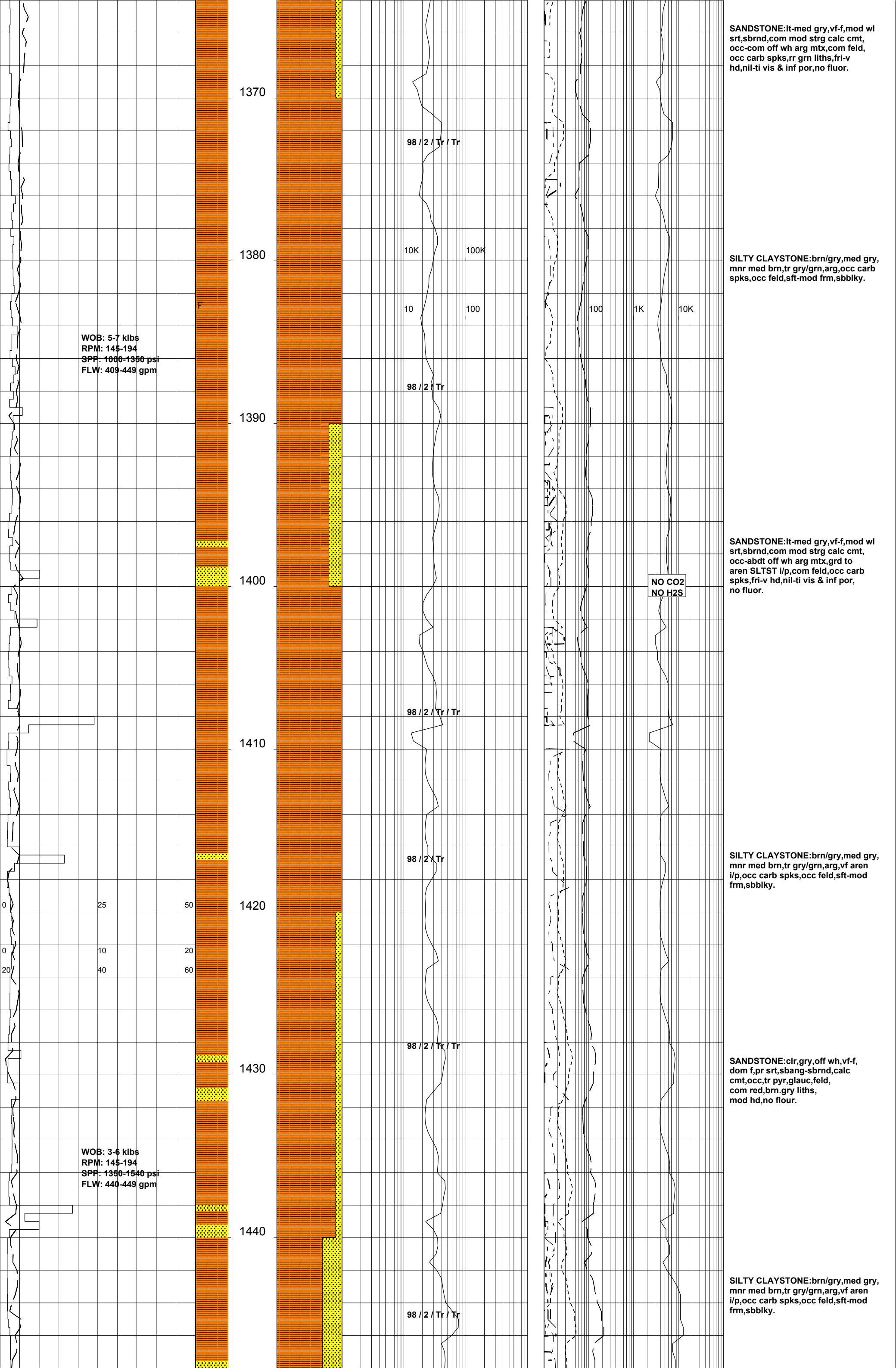


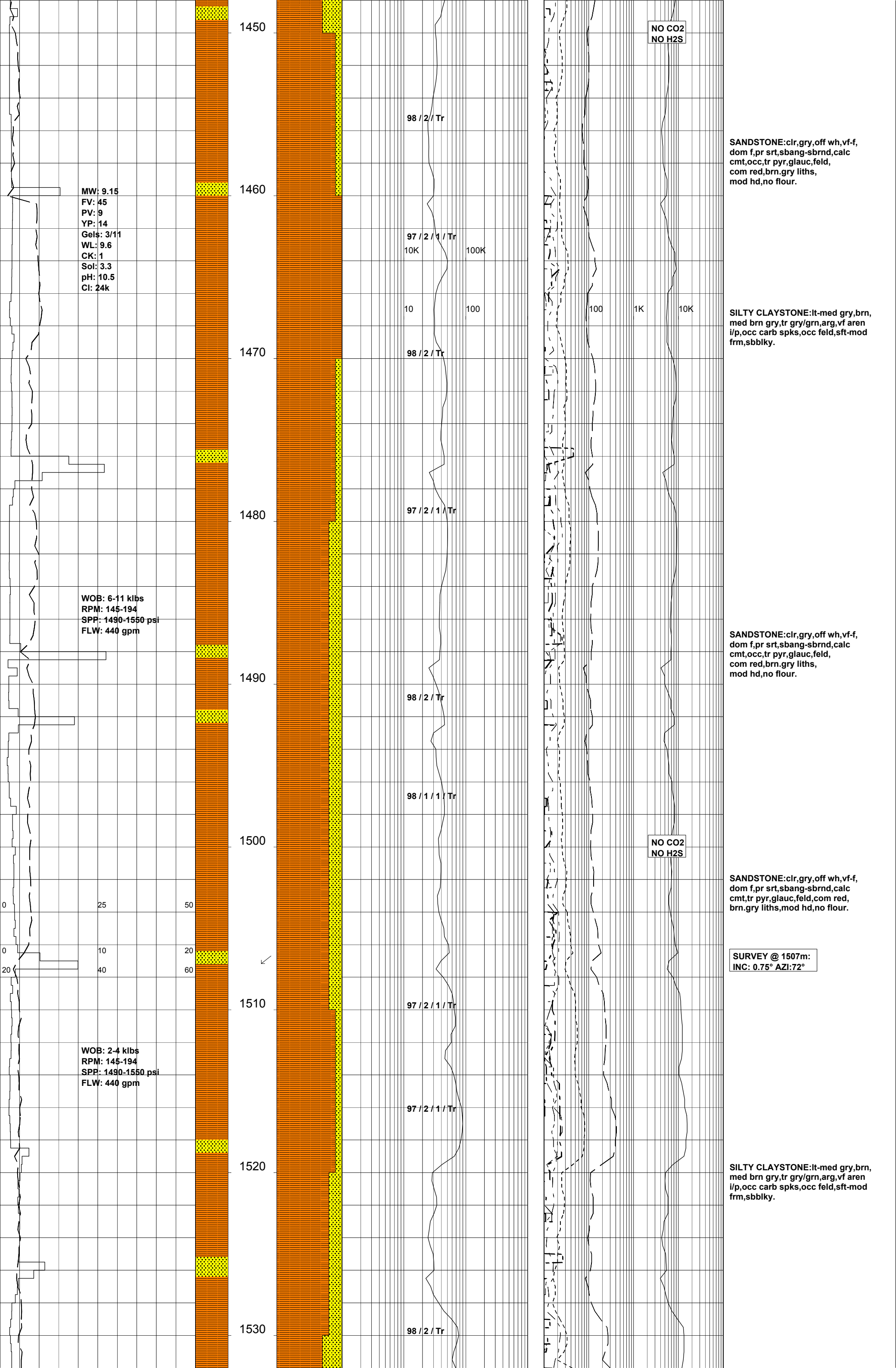


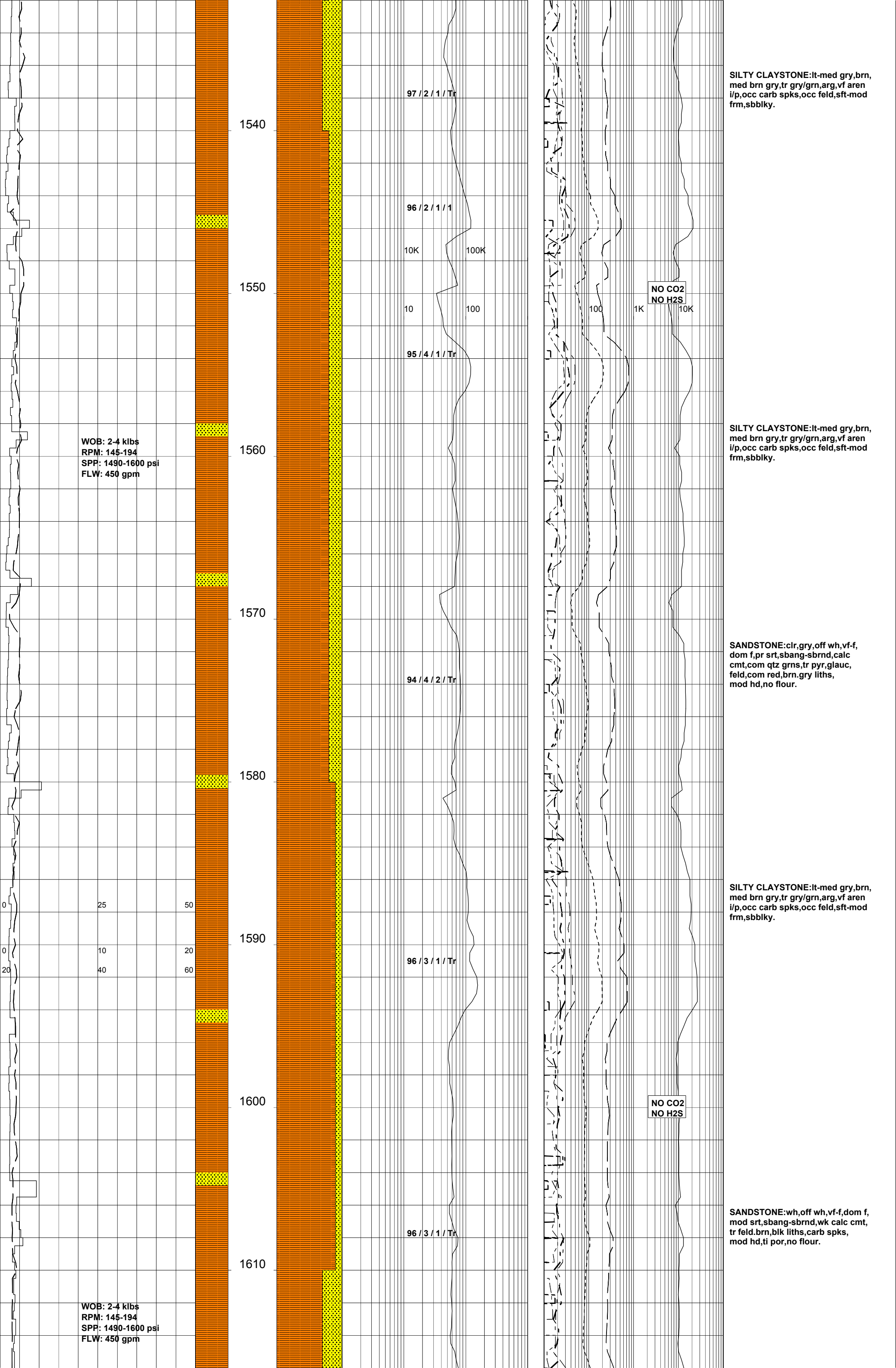


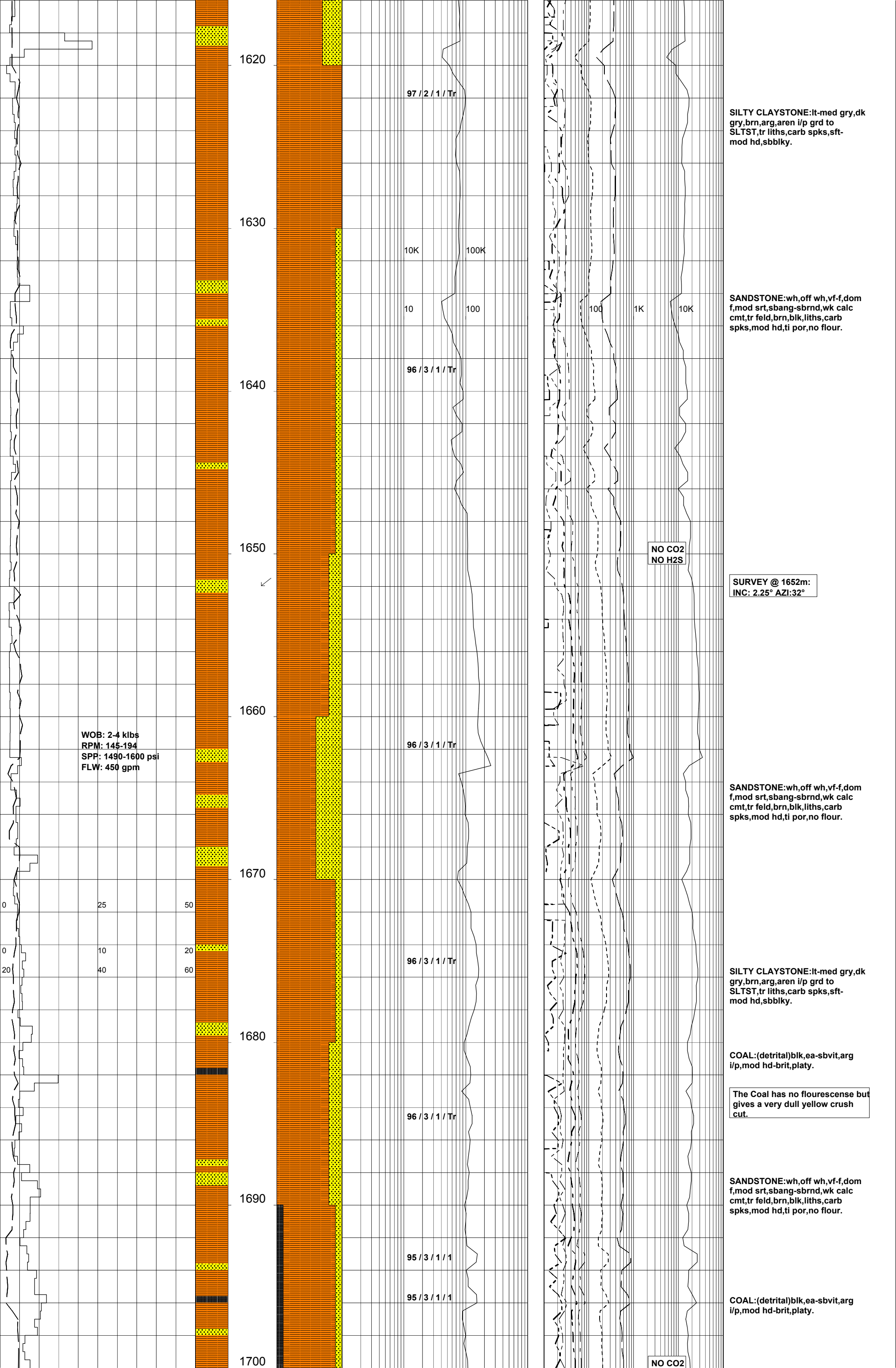


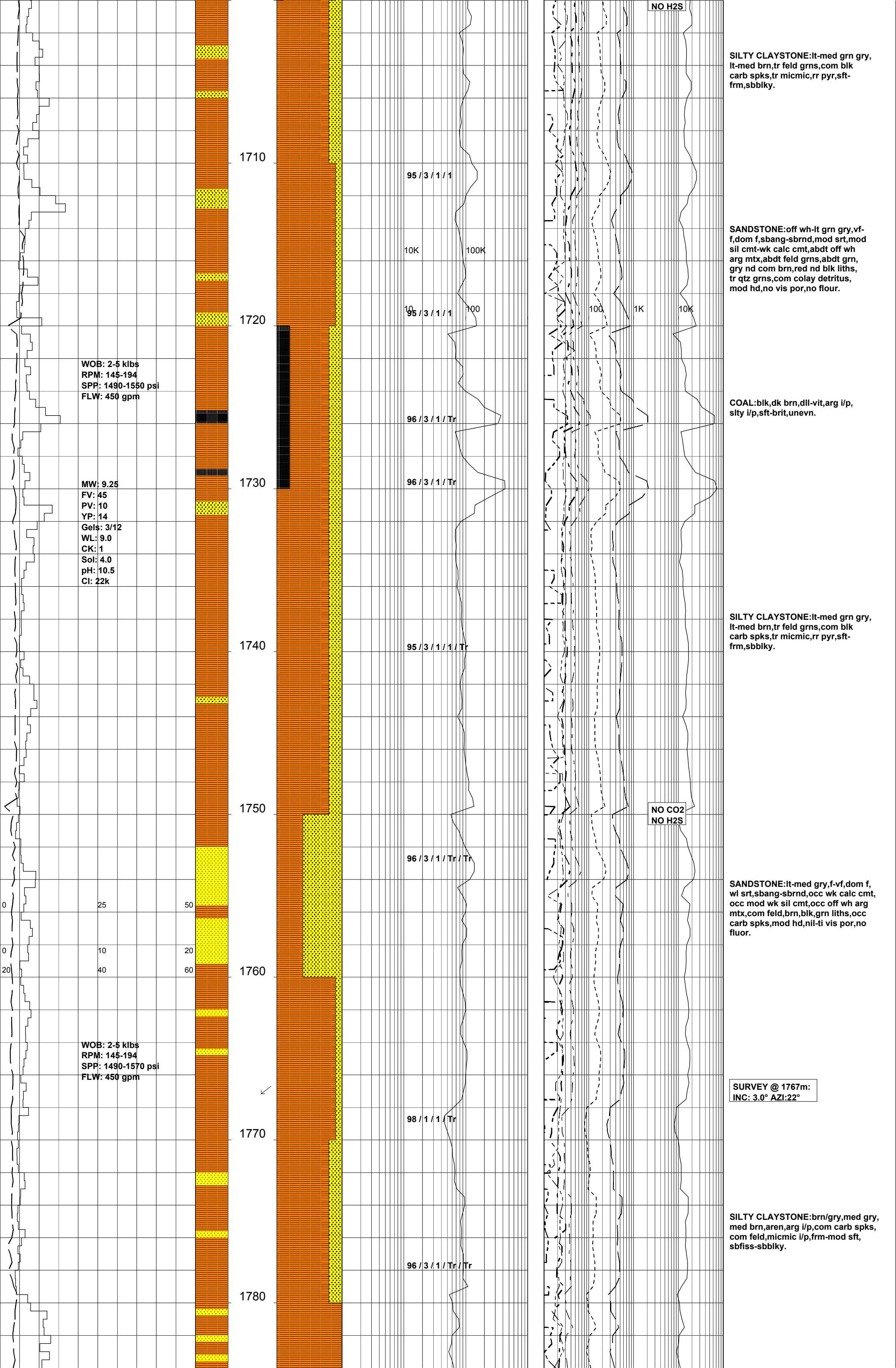




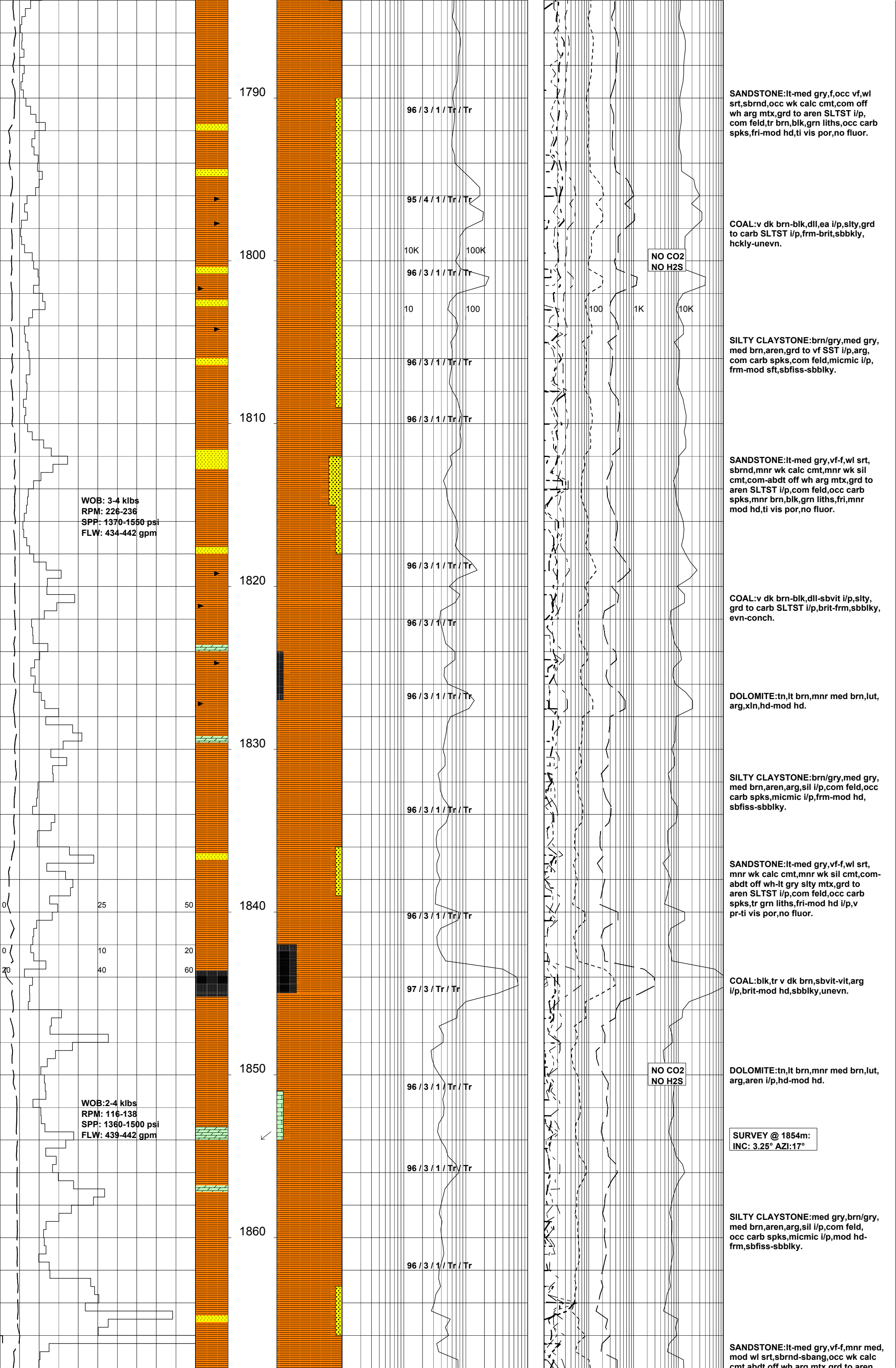


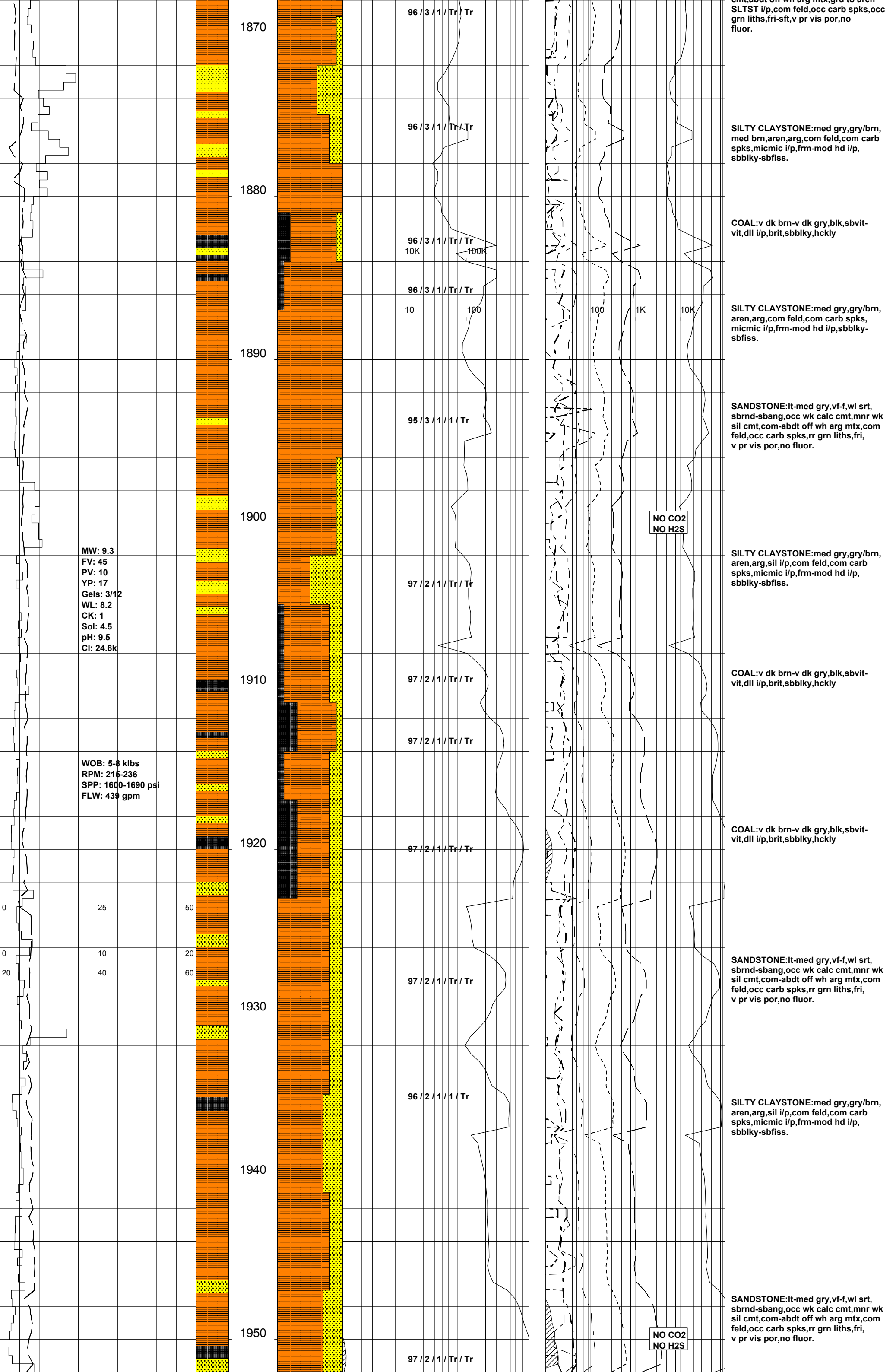


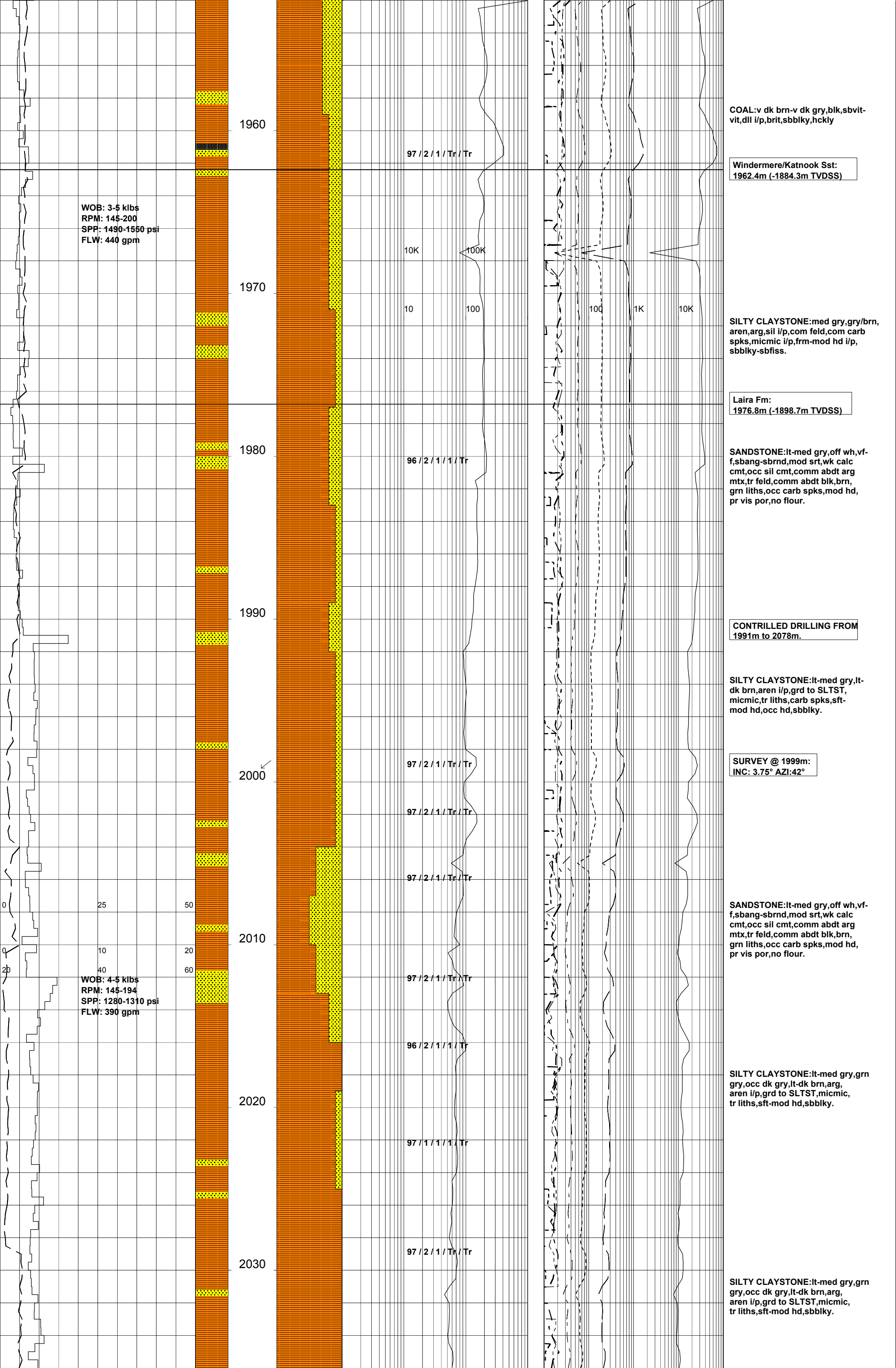












COAL: v dk brn-v dk gry, blk, sbvit-vit, dll i/p, brit, sbblky, hckly

Windermere/Katnook Sst:  
1962.4m (-1884.3m TVDSS)

Laira Fm:  
1976.8m (-1898.7m TVDSS)

SANDSTONE: lt-med gry, off wh, vf-f, sbang-sbrnd, mod srt, wk calc cmt, occ sil cmt, comm abdt arg mt, tr feld, comm abdt blk, brn, grn liths, occ carb spks, mod hd, pr vis por, no flour.

CONTRILLED DRILLING FROM  
1991m to 2078m.

SILTY CLAYSTONE: lt-med gry, lt-dk brn, aren i/p, grd to SLTST, micmic, tr liths, carb spks, sft-mod hd, occ hd, sbblky.

SURVEY @ 1999m:  
INC: 3.75° AZI: 42°

SANDSTONE: lt-med gry, off wh, vf-f, sbang-sbrnd, mod srt, wk calc cmt, occ sil cmt, comm abdt arg mt, tr feld, comm abdt blk, brn, grn liths, occ carb spks, mod hd, pr vis por, no flour.

SILTY CLAYSTONE: lt-med gry, grn gry, occ dk gry, lt-dk brn, arg, aren i/p, grd to SLTST, micmic, tr liths, sft-mod hd, sbblky.

SILTY CLAYSTONE: lt-med gry, grn gry, occ dk gry, lt-dk brn, arg, aren i/p, grd to SLTST, micmic, tr liths, sft-mod hd, sbblky.

